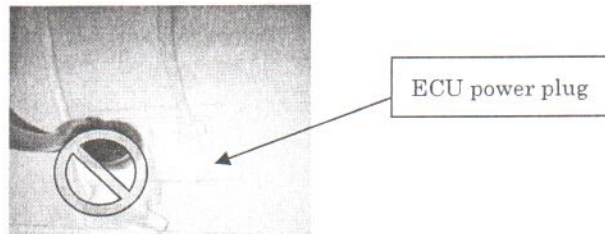


## APS ECU Quick Installation Guide

### Step 1: Power-on ECU

Plug the AC power cord into the AC input on the ECU, and then plug the other end into a **dedicated wall outlet** (NOT power strip, NOT surge protector, NOT UPS).

**Warning:** Do not plug any electrical devices into the same outlet that the ECU is connected to.



**Warning:** Do not plug the ECU into a power strip, surge protector, or uninterruptable power supply (UPS). Keep those devices far away from ECU. Those devices can substantially diminish PLC communication performance.

### Step 2: Connect ECU to Internet

Option 1: LAN connection - use the LAN Cable to connect ECU to a Broadband Router.

Option 2: WiFi connection – use WiFi bridge to connect ECU to a Broadband Router.

- Configure the WiFi Bridge to connect to Wireless Router, please refer to WiFi Bridge User Manual
- Connect the RJ45 LAN Cable and USB Cable on WiFi Bridge to the RJ45 Port and USB Port on ECU

ECU will automatically obtain the IP address, such as: 139.168.200.56, and connect to Internet. If the IP address shows "60.190.131.228", it means ECU failed to get IP address. Make sure the connection between ECU and Router is working well, reboot ECU, it will obtain IP address.

### Step 3: Connect microinverters to ECU.

- 1) Using a computer that is connected to the internet, enter the IP address from the ECU display into the Internet Browser. This should bring up the screen below:

[Home](#)      [Real Time Data](#)      [Configuration](#)      [Administration](#)

ECU ID	203000002339
Lifetime generation	3.34 kWh
Last System Power	327 W
Generation Of Current Day	0.24 kWh
Last connection to website	2014-10-11 14:34:02
Number of Inverters	2
Last Number of Inverters Online	2
Current Software Version	V3.10
Database Size	47 kB
Current Timezone	Asia/Shanghai
ECU Mac Address	80:97:1B:00:09:8C

ALTENERGY POWER SYSTEM INC. (APS)

- 2) Click “Administration”, then click “ID management”, please enter the inverters ID to “Enter Inverter ID” section.

<a href="#">Home</a>	<a href="#">Real Time Data</a>	<a href="#">Configuration</a>	<a href="#">Administration</a>
<a href="#">ID Management</a>	<a href="#">Date,Time,Timezone</a>	<a href="#">Language</a>	<a href="#">Network Connectivity</a>

Enter Inverter ID:  
250000003002  
250000003003  
403000007332  
404900058947  
404900059568

- 3) Click “OK”, ID will be updated in ECU.

<a href="#">Home</a>	<a href="#">Real Time Data</a>	<a href="#">Configuration</a>	<a href="#">Administration</a>
<a href="#">ID Management</a>	<a href="#">Date,Time,Timezone</a>	<a href="#">Language</a>	<a href="#">Network Connectivity</a>

total:5  
250000003002  
250000003003  
403000007332  
404900058947  
404900059568

#### Step 4: Check power of the microinverters

- 1) Click “Real Time Data” from the ECU Home, to view the real-time power of all microinverters.
- 2) If a microinverter does not show up, replace it.
- 3) If a microinverter shows abnormal power different from others, e.g. 2W, replace it.

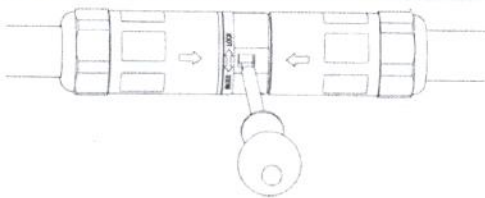
#### Step 5: Configure time-zone

- Click “Administration”, then “Date, Time, Time-zone”

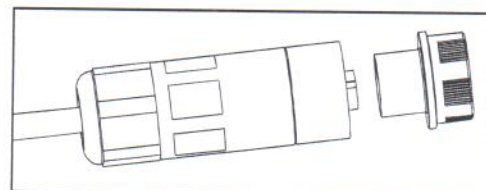
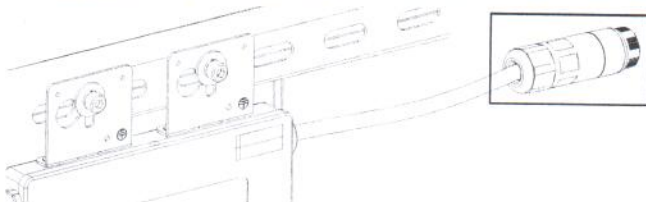
ALTENERGY POWER SYSTEM INC. (APS)

APSmicroinverter.com

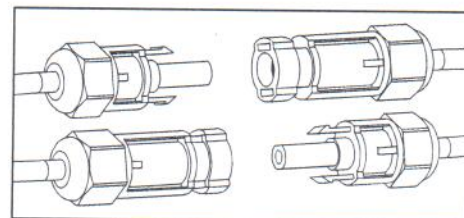
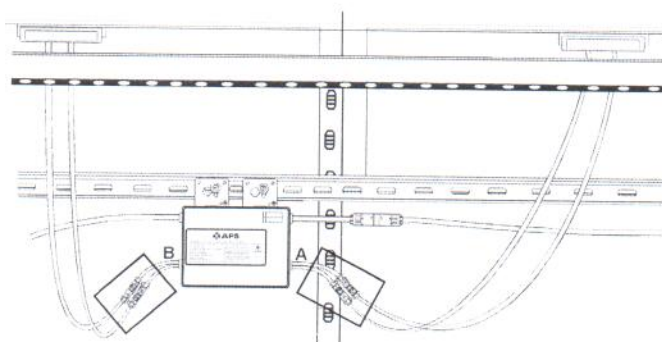
**NOTE:** Use screwdriver to split the Main connectors.



**Step 6.** Install a protective end cap on the open AC connector of the last microinverter in the AC branch circuit.

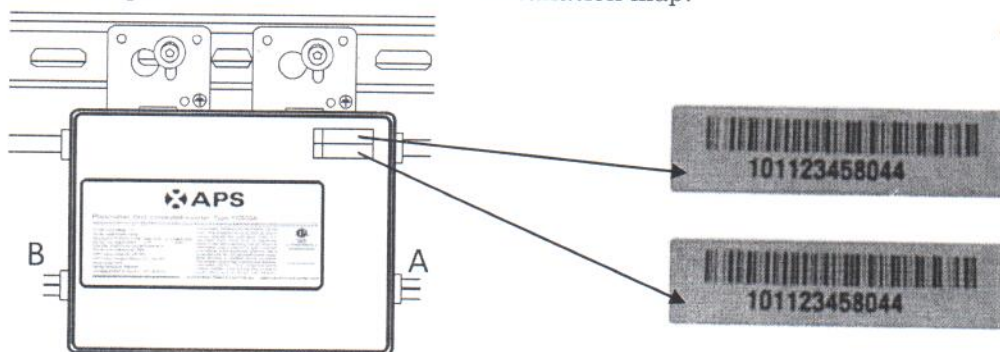


**Step 7.** Place the PV modules and connecting each YC500 to the two PV modules close-by.



**Step 8.** Complete the APS installation map.

Each APS microinverter has two removable serial number labels. Peel a label off, and affix it to the respective location on the APS installation map.



*Note: Step 1~8 can change sequence for convenience of installation.*

**Step 9.** Start the operation

1. Turn on the AC circuit breaker on each microinverter AC branch circuit.
2. Turn on the main utility-grid AC circuit breaker. Your system will start producing power after a two-minute waiting time.

ALTENERGY POWER SYSTEM INC. (APS)

APSmicroinverter.com

Product information is subject to change without notice.