

#### Product Features

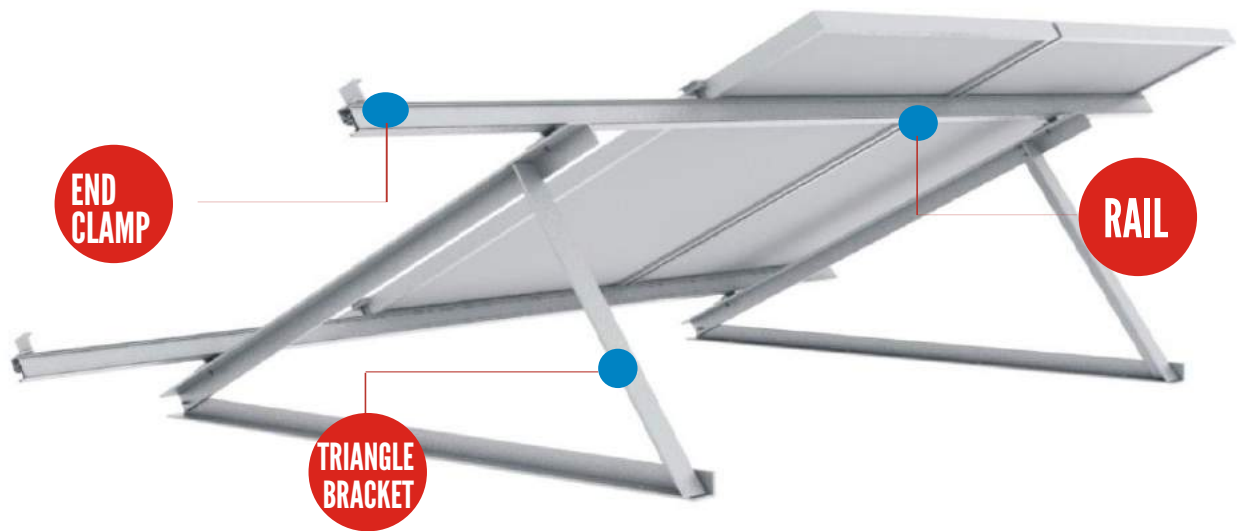
- Widely used for both crystalline and thin film module .
- Easy & quick installation.
- Few components and no more than two kinds of tools in whole system fixation.
- All system components are made with high quality aluminum & stainless steel.

#### Technical Data

Project site	Metal sheet roof
Slope of roof	Up to 60°
Max Building Height	Up to 20m
Wind Load	60m/s
Snow Load	1.4kn/ m <sup>2</sup>
Applicable Module	Frame / frameless module, crystalline/ thin film module
Module Orientation	Landscape or portrait
Standard	AS/NZS 1170
Material	Stainless steel 304, Al6005-T5



## System Overview



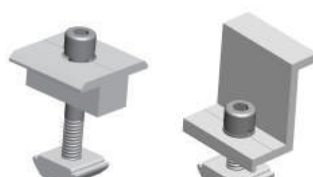
## Key Components



**GS Rail**



**RAIL SPLICE KIT**

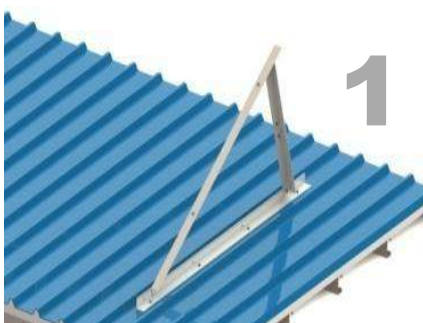


**Module Clamps**

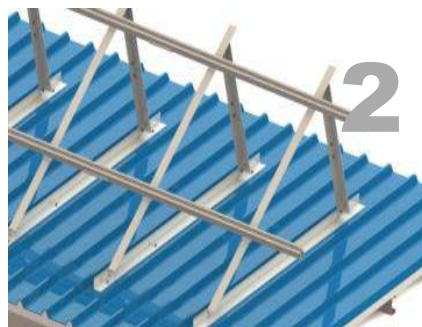


**Triangle Bracket**

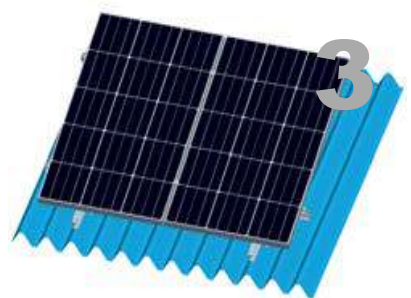
## Installation



Fix triangle bracket on the roof by tapping screws or hanger bolt in metal roof( expansion bolts in flat roof).



Install mounting GS rail on triangle bracket by two rail clamps



Fix the modules on the rail by mid clamps and end clamps.